

RINCOMATIC SYMA32

SALES FORMAT:
IN PARTS - DIY



How to build the product part number and what specifications to take into consideration

Syma32 Profile



PART NUMBER

TTIRSY32 **XX** mm P

XX color code:

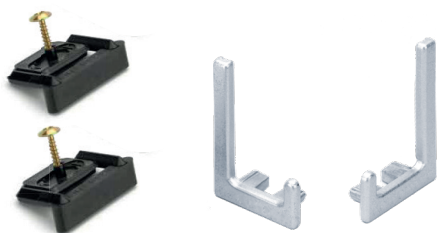
35 matt silver	01 gloss white
50 matt inox champagne	01M matt white
52 gloss black	60 anthracite
52M matt black	

mm Handle length

L1: 2950 mm
L2: 2670 mm

20 u.

Set of caps L+R + 2 clips + 2 screws



PART NUMBER

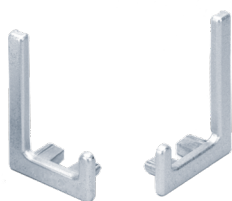
BTERSY32 **XX**

XX color code:

35 matt silver	01 gloss white
50 matt inox champagne	01M matt white
52 gloss black	60 anthracite
52M matt black	

25 u.

Pair of caps L+R



PART NUMBER

PTERSY32 **XX**

XX color code:

35 matt silver	01 gloss white
50 matt inox champagne	01M matt white
52 gloss black	60 anthracite
52M matt black	

100 u.

Clip + screw



PART NUMBER

CLIPSYMAR

200 u.

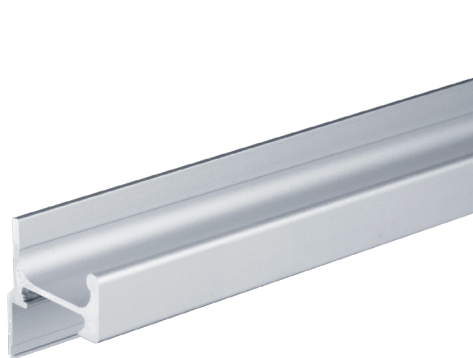
RINCOMATIC SYMA14

SALES FORMAT:
IN PARTS - DIY



How to build the product part number and what specifications to take into consideration

Syma14 Profile



PART NUMBER

TTIRSY14 **XX** mm P

XX color code:

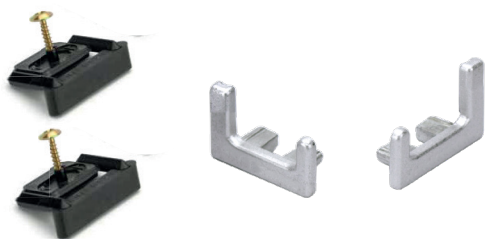
35 matt silver	01 gloss white
50 matt inox champagne	01M matt white
52 gloss black	60 anthracite
52M matt black	

mm Handle length

L1: 2950 mm
L2: 2670 mm

20 u.

Set of caps L+R + 2 clips + 2 screws



PART NUMBER

BTERSY14 **XX**

XX color code:

35 matt silver	01 gloss white
50 matt inox champagne	01M matt white
52 gloss black	60 anthracite
52M matt black	

25 u.

Pair of caps L+R



PART NUMBER

PTERSY14 **XX**

XX color code:

35 matt silver	01 gloss white
50 matt inox champagne	01M matt white
52 gloss black	60 anthracite
52M matt black	

100 u.

Clip + screw



PART NUMBER

CLIPSYMAR

200 u.